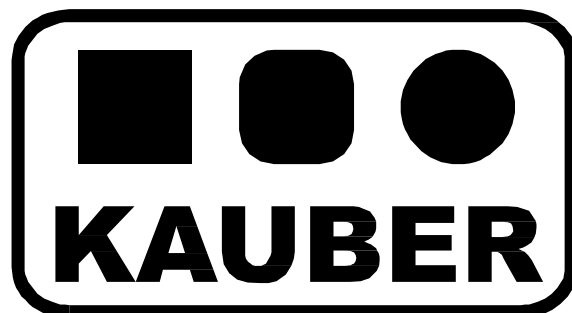
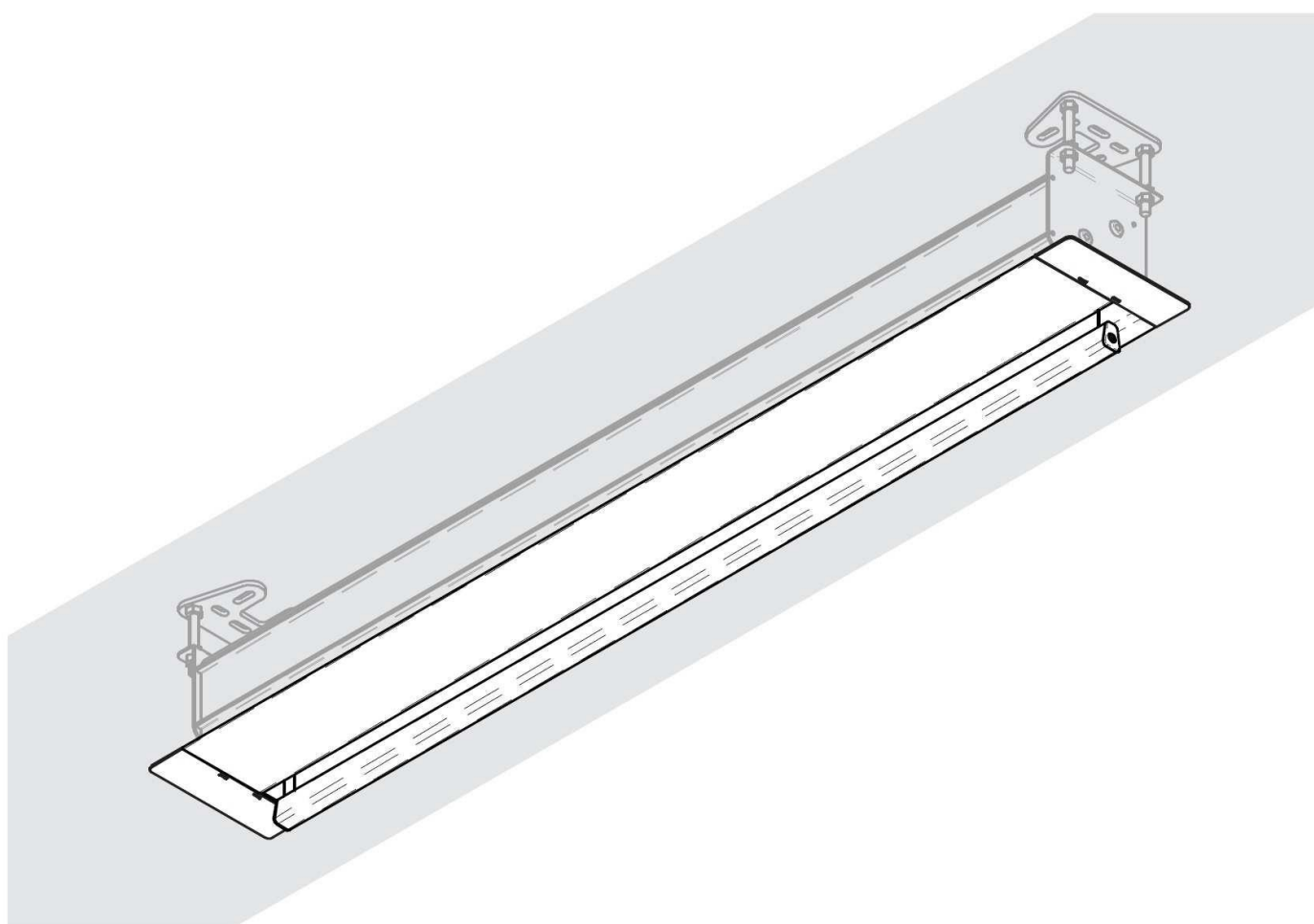


CEILING PROJECTION SCREEN INSTALLATION GUIDE



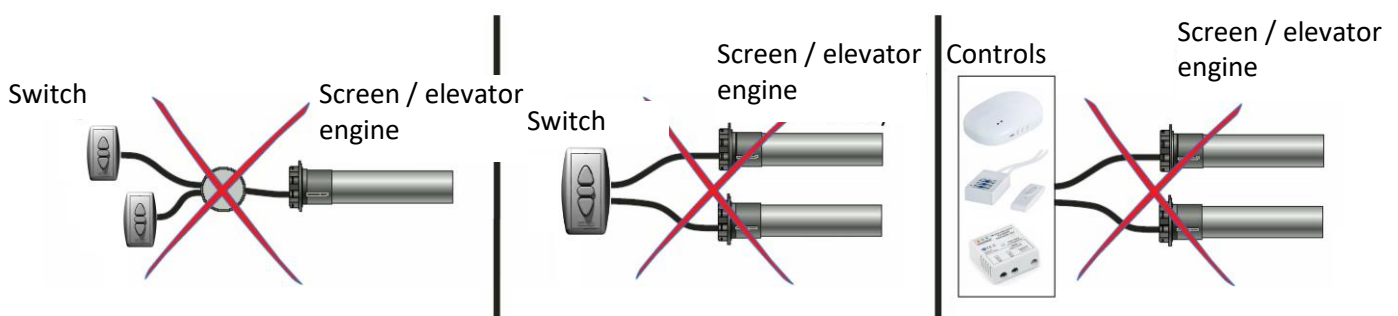
IN CEILING



KAUBER InCeiling is a top-class electric projection screen, designed for installation in a suspended ceiling. Its smartly designed aluminum housing has many installation aids. In the Tensioned version it is additionally equipped with a special system to get an even more tense projection surface. The InCeiling series was created for suspend ceilings in both conference rooms and home cinemas.

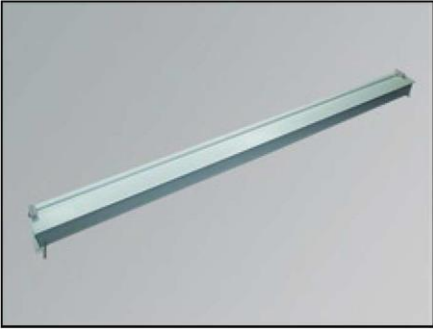
IMPORTANT!! **INSTALLATION AND OPERATION NOTES**

1. **One of the wooden side blocks protecting the contents of the cardboard is at the same time** a mounting holes template - do not throw it out before the installation is finished.
2. The cassette and the bottom bar of the screen are protected against damage by polyurethane foam. Remove the foams protecting the bottom bar after mounting the screen.
3. The screen should be installed in a location away from moisture and strong sunlight.
4. A properly mounted screen must be absolutely levelled.
5. Use a soft, moistened cloth for cleaning. Do not use active cleaners. Protect the screen from ingress of water or other liquid inside. After cleaning, the screen should be carefully wiped to remove any residual moisture.
6. **DIMENSIONAL TOLERANCE:** Projection surface: $\pm 20\text{mm}$; components $\pm 3\text{mm}$
7. The screen / elevator cannot have connected more than one remote control at once.
8. One remote control (for ex. RC01 / RC02 / Trigger 12V / Trigger230V / IR Receiver / RS Receiver, etc.) cannot be connected at once to more than one screen, elevator, roller-blind, etc. Such connection can only be made by using the SG-2 group controller.

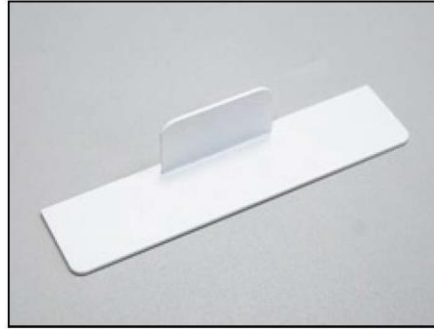


PACKAGE CONTENTS

projection screen - 1 pcs



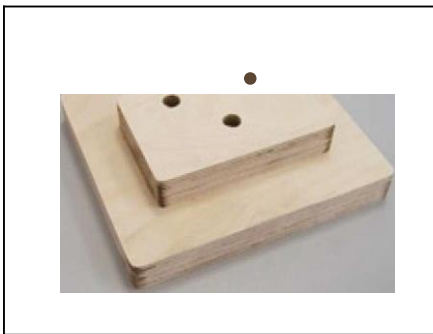
side panel - 2 pcs



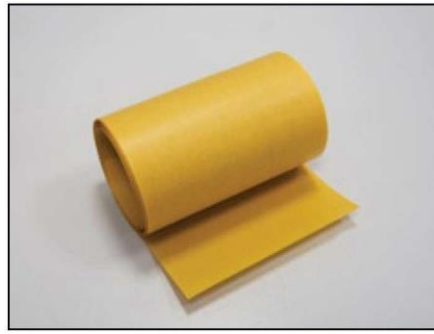
fixing support - 2 pcs



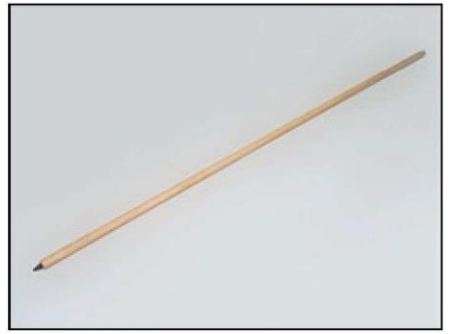
mounting holes template. - 1 pcs



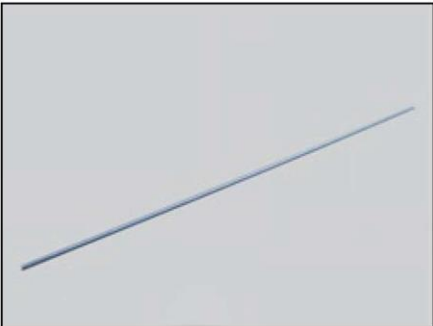
main hole template - 1 pcs



holes marker - 1 pcs



threaded rod - 4 pcs



M8 nut - 12 pcs.



expansion dowel $\varnothing 10$ - 6 pcs



engine adjustment wrench - 1 pcs



tubular wrench 13 - 1 pcs



protective gloves - 2 pairs



SCREEN INSTALLATION

1. Carefully unpack the contents of the packaging, paying special attention to wooden sides that protect the contents of the carton from damage. Remember that one of them functions also as a template for mounting holes, so do not throw it out before the installation is finished!
2. Stick the foil template of the main hole in the place designated for mounting the screen, and then outline it with a pencil (**Fig.1**). After removing the foil, carefully cut in the ceiling the hole along the outline made on the basis of the template.

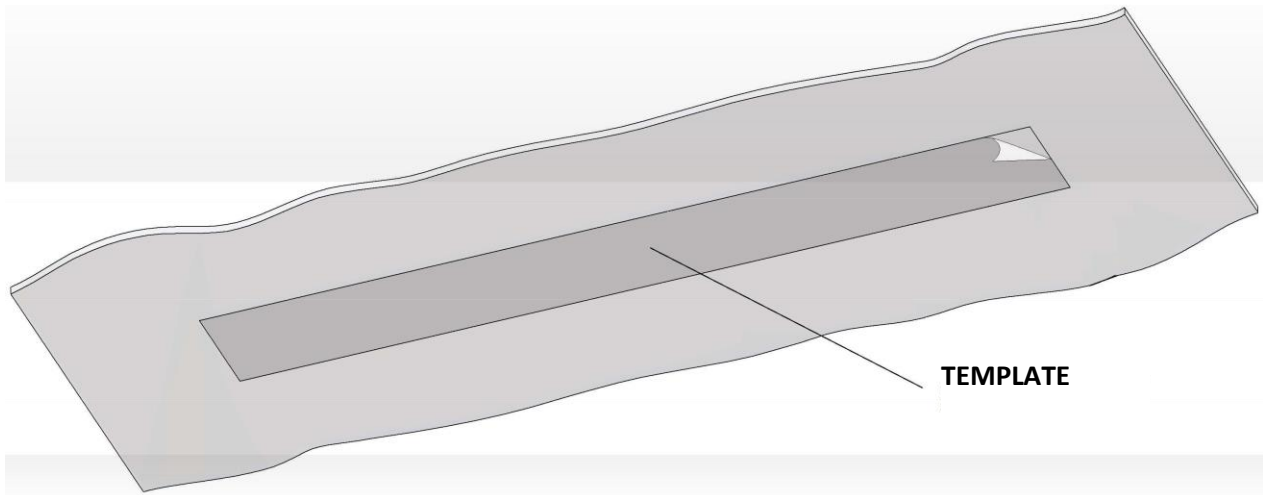


Fig.1

3. Put a wooden block protecting the contents of the cardboard at each of the two ends of the hole, so that the arrow printed on it points to the outside of the hole (**Fig.2, Fig.2a**).

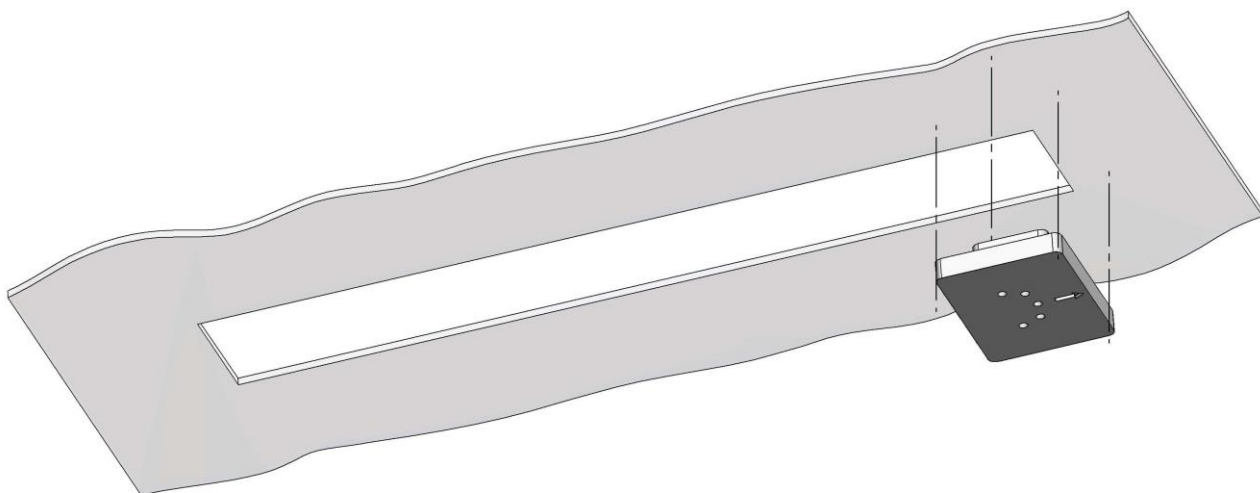


Fig.2

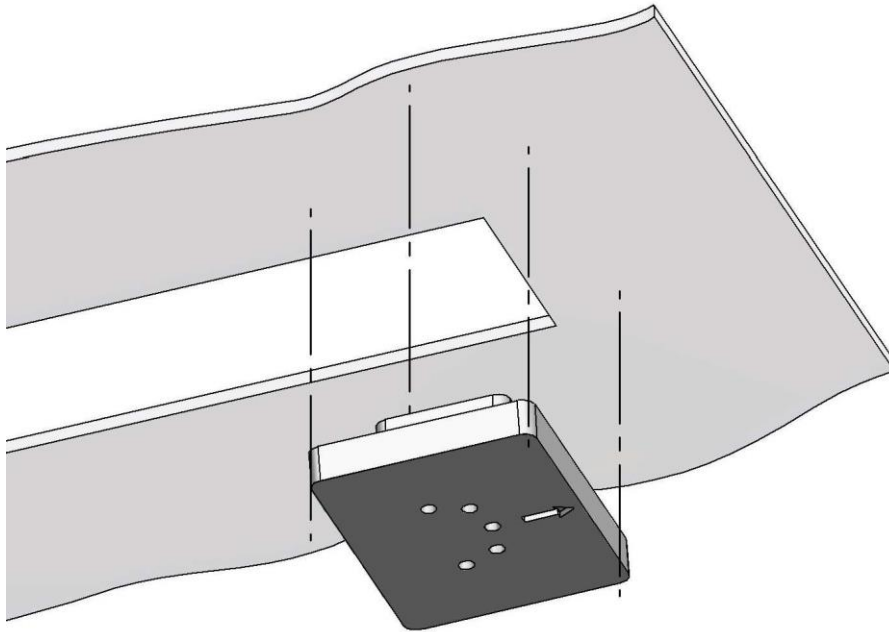


Fig.2a

4. Hold the template, and then guide the marker through the holes in the template to mark the drilling of holes mounting in the fixed ceiling, (**Fig.3**).

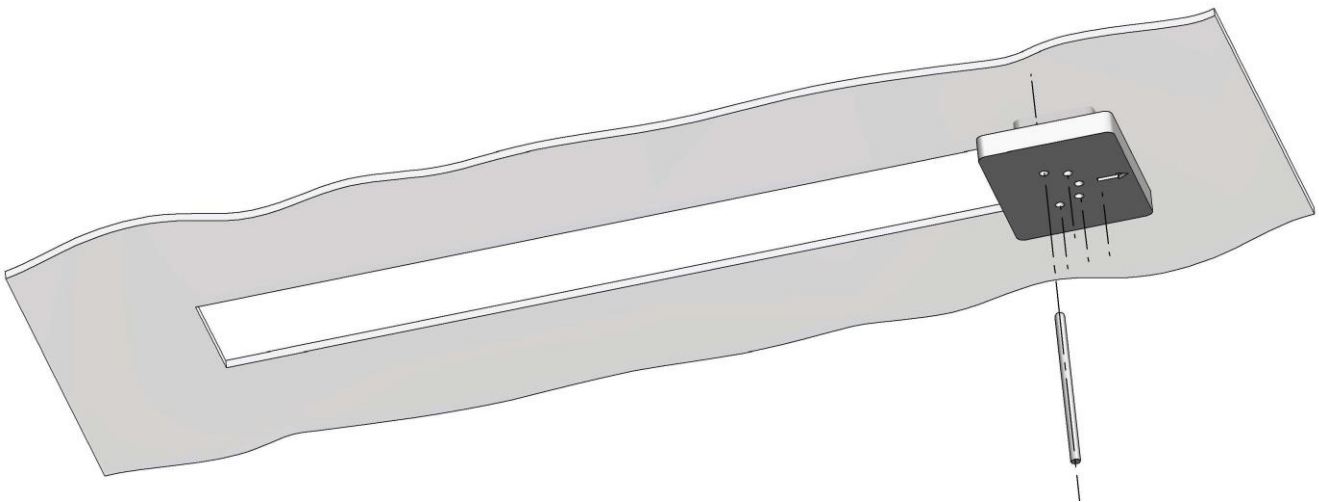


Fig.3

5. Using the $\varnothing 10$ drill, drill the holes for the mounting dowels in the marked places. The holes should be drilled in the correct order, starting with the hole marked on the template with the number 1 (**Fig.4**). After drilling the hole 1 correctly, move to drilling holes 2 and 3. Then, drill holes 4 and 5. Repeat for the opposite side.

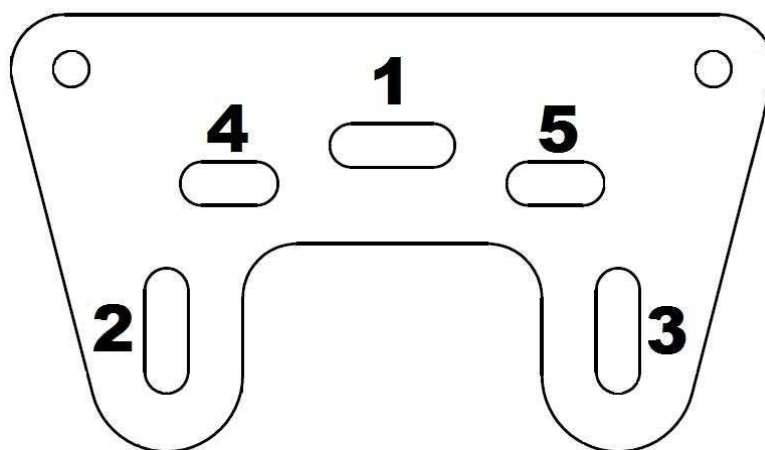


Fig.4

- In place of the holes drilled in fixed ceiling, screw the mounting supports using the attached dowels and screws (**Fig.5**).

NOTE! The mounting dowels supplied in the set can be used only for ceilings made of solid materials (for ex. concrete, suporex). When attaching the screen to materials other than those listed, choose appropriate mounting dowels.

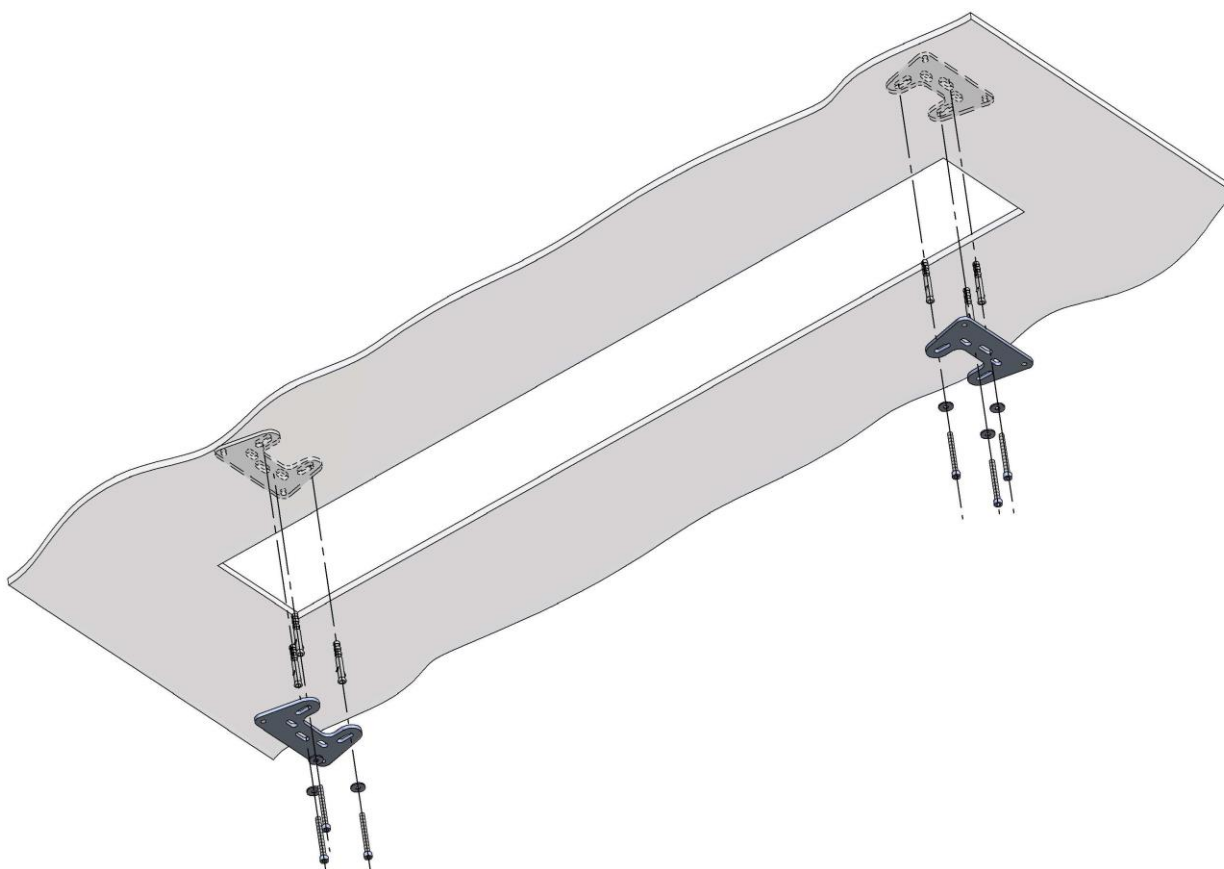


Fig. 5

7. Threaded rods have to be cut to the appropriate length using the following formula:

$$\text{rod length} = \text{distance between the fixed ceiling and the bottom edge of the suspended} - 7 \text{ cm}$$

8. After cutting, each of the threaded rods should be screwed into a suitable hole in the mounting support, and then countered with an M8 nut (**Fig.6**).

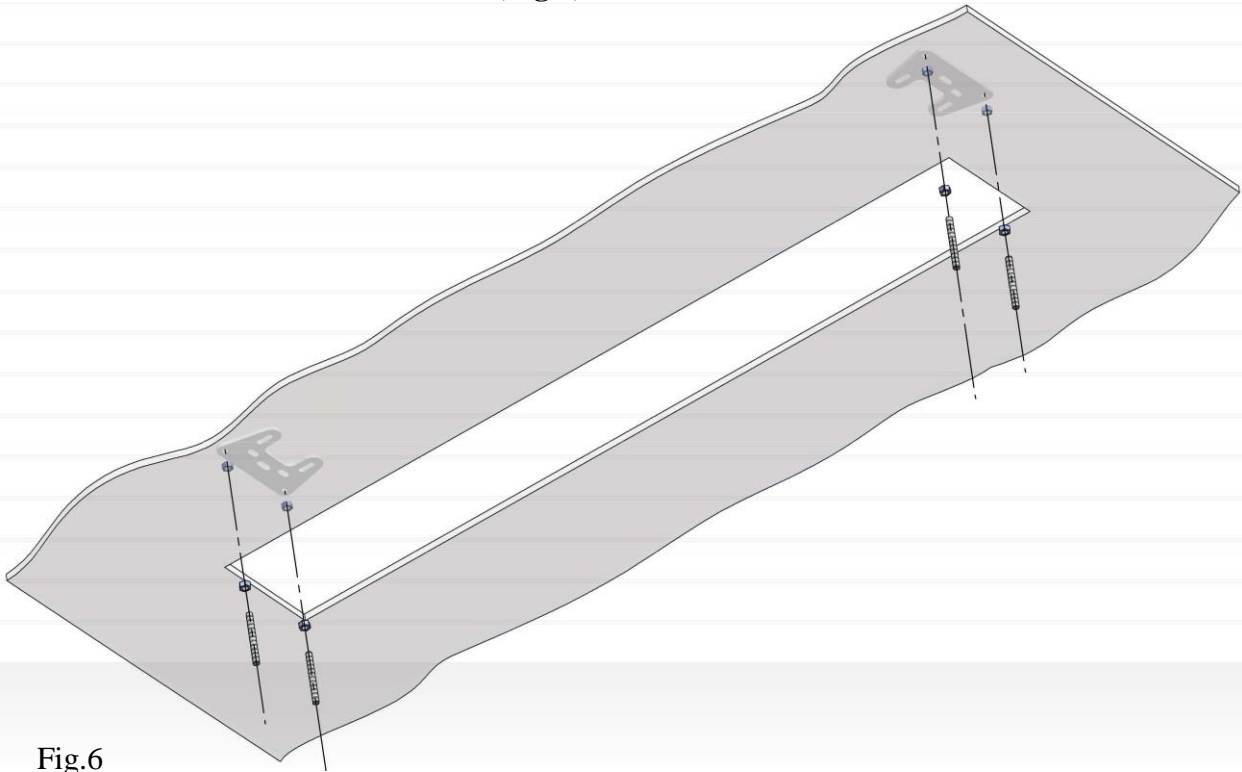


Fig.6

9. Tighten each of the mounted rods with an M8 nut at a distance of approx. 5-6 cm from the bottom end of the rod, then try on the screen cassette. If necessary, adjust the position of the nut so that the mounting brackets of the screen cassette rest on the nuts and the bottom edge of the cassette rests against the suspended ceiling.

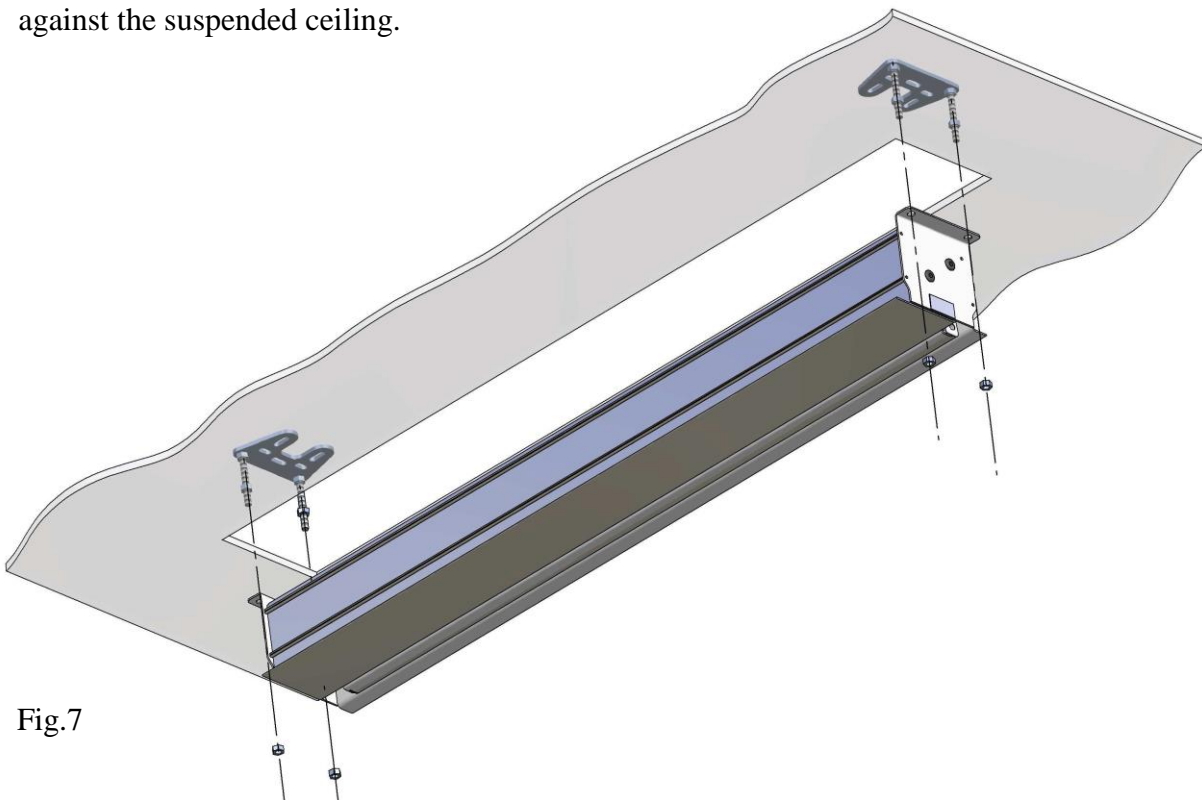


Fig.7

10. After connecting the power supply (see page no.15) slide the screen onto the mounted rods and screw each of the 4 M8 nuts using the included pipe wrench while checking the stability of the entire installation (**Fig.8**). A properly installed screen must be levelled. Correct the fixing by unscrewing or screwing the mounting nuts on the appropriate threaded rods.

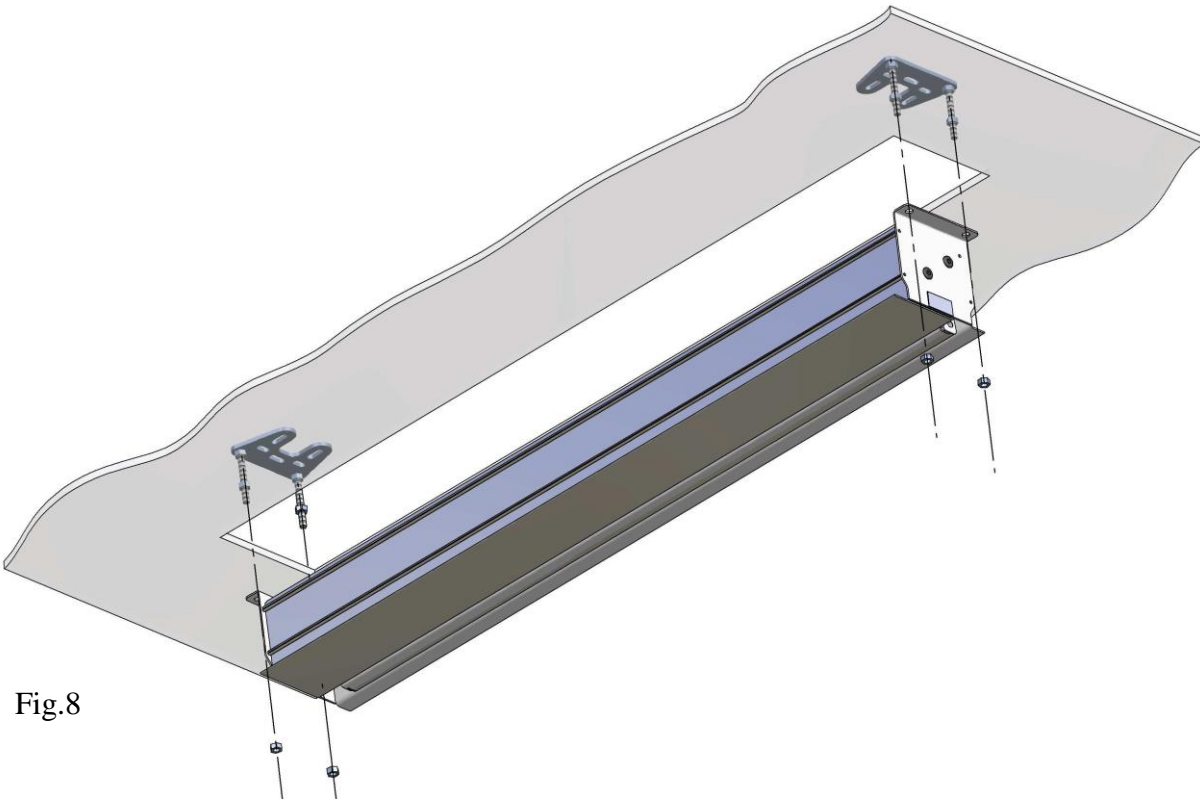


Fig.8

A properly installed screen is shown below (**Fig.9**). All connections are countered. Such an installation protects the screen against the occurrence of vibrations and possible resonances. The movement of the nuts 1 and 2 allows to accurately level the screen, which is required for the proper operation of the screen.

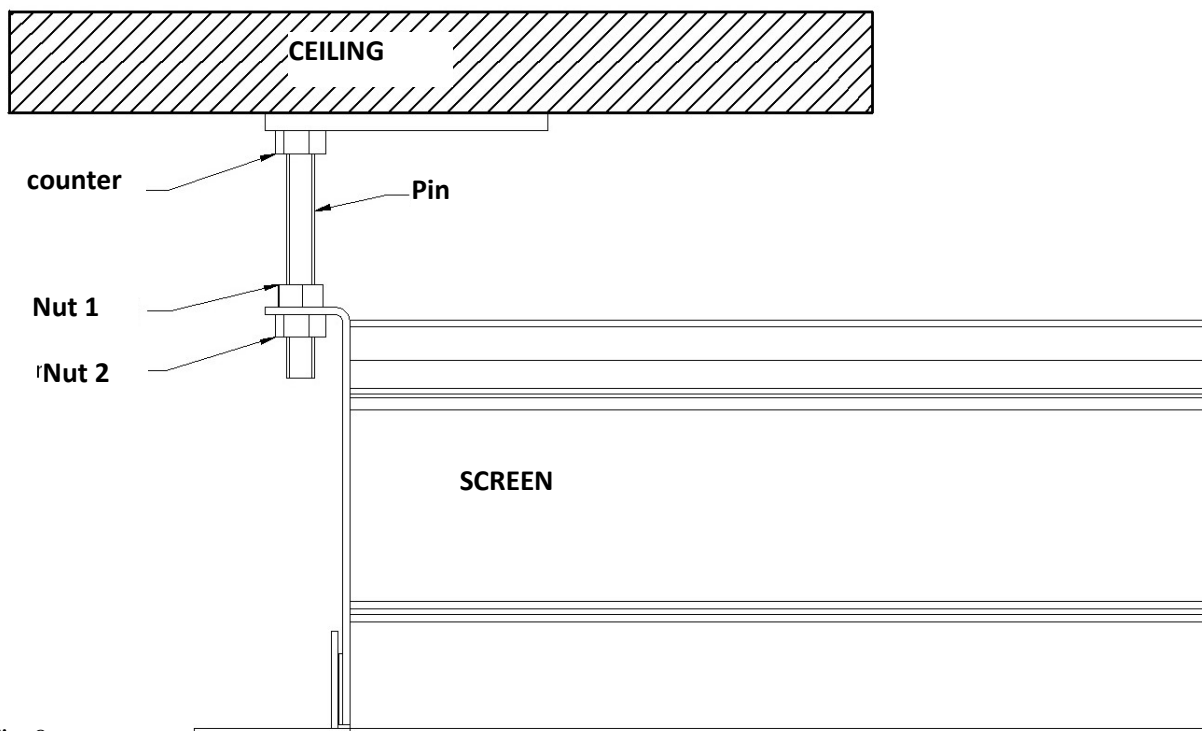


Fig.9

11. The delivered screen has end positions set in accordance with the order. If the surface of the screen scrolls too low or not enough, correct the bottom end position using the included wrench. **Before adjustment, check in the warranty card with what type of engine is your screen equipped with.**

NOTE! Adjustments to the end positions can only be made by a qualified person. All adjustments are made at your own risk. In the event of an inaccurate adjustment, the screen may get damaged, which is not covered by the terms of the warranty.

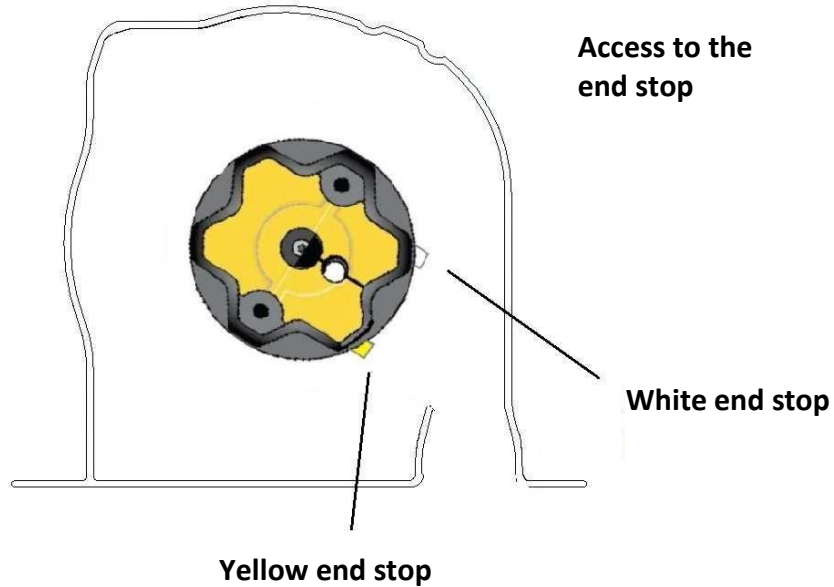


Fig.10

12. After final verification of the entire installation, place the side panels on magnets stuck to the panels (**Fig. 11**). In screens with side tension, unfold the surface completely. If necessary, use the allen key to adjust the tension with the bolts on both sides of the bottom bar.

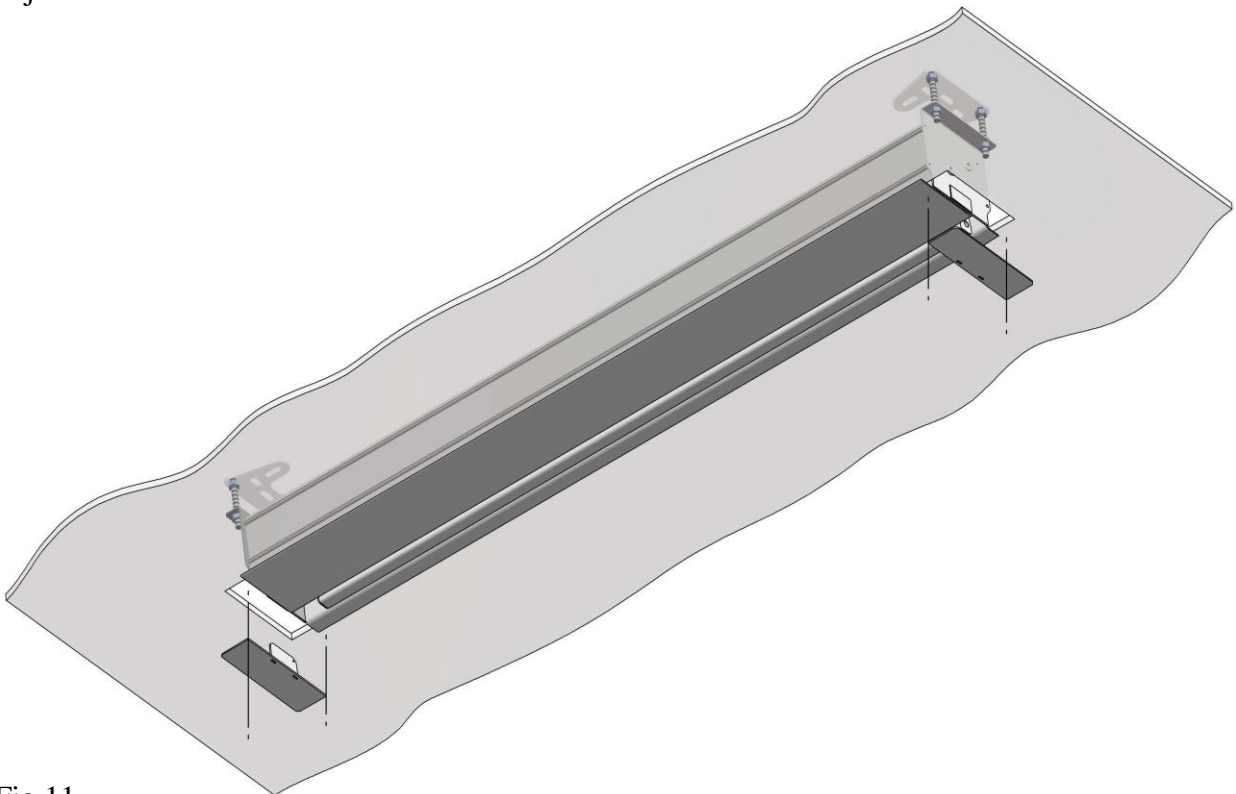


Fig.11

13. After completing the screen installation, peel off the foil protecting the cassette from damage (**Fig.12, Fig.12a**).

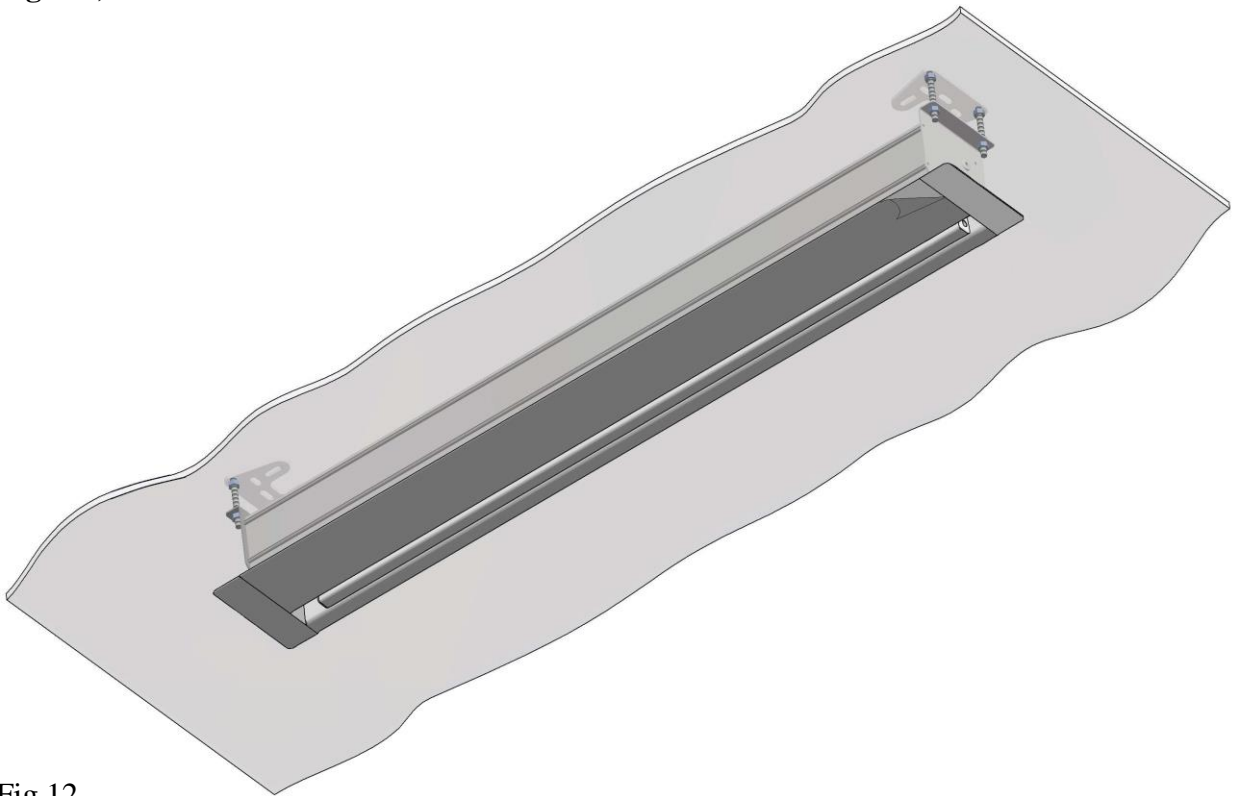


Fig.12

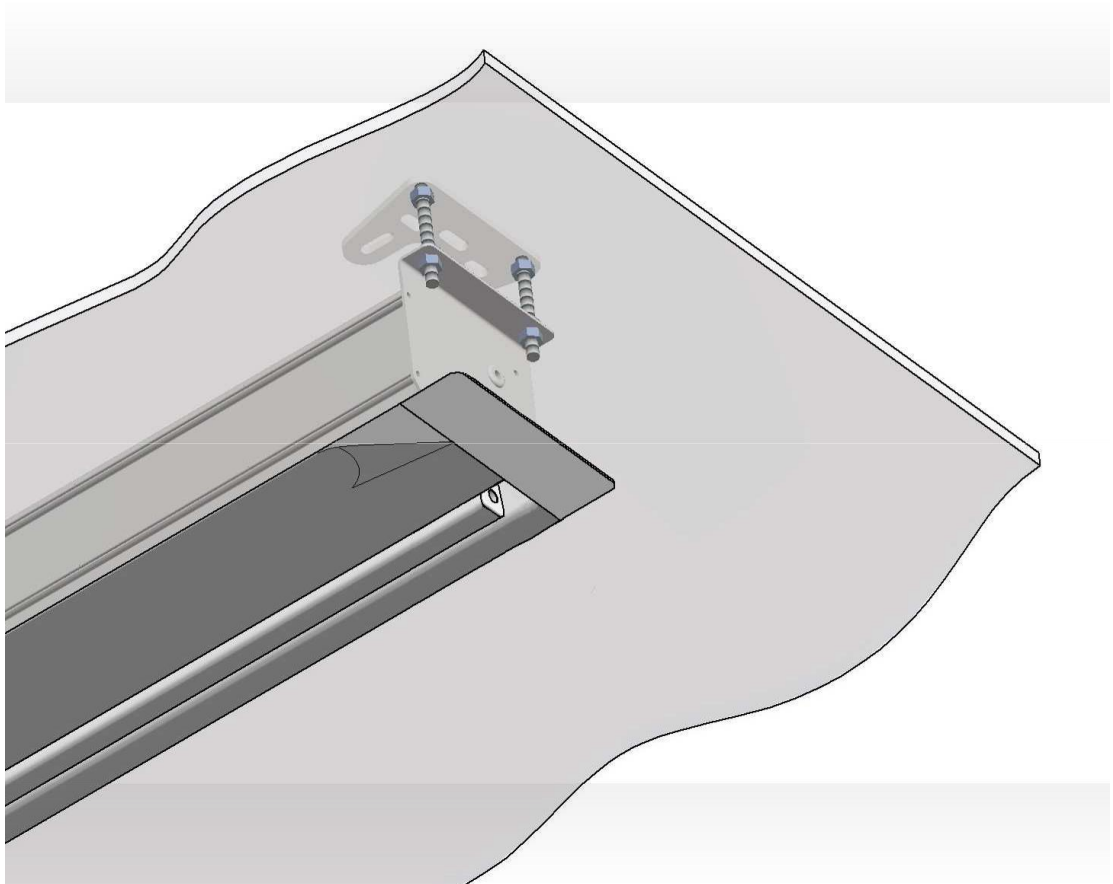


Fig.12a

Adjusting the end positions (engine type "C" – you can check the engine type in the warranty card)

- Correcting the **top** end position (white end stop).

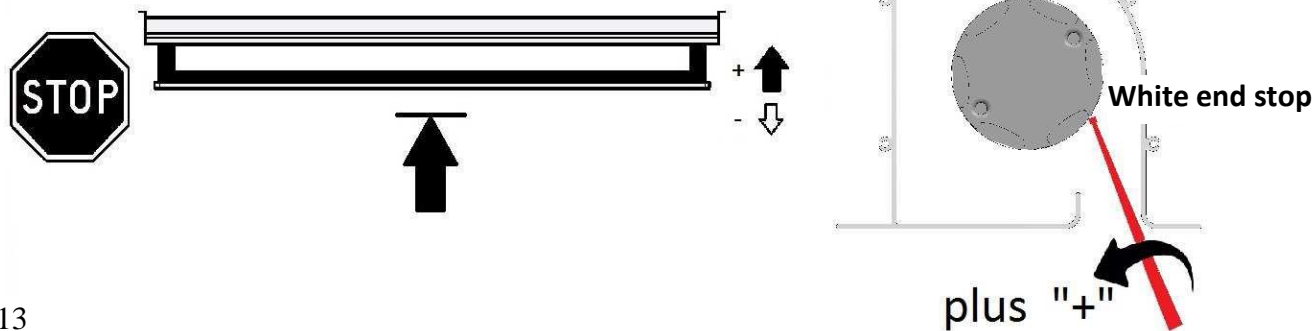


Fig.13

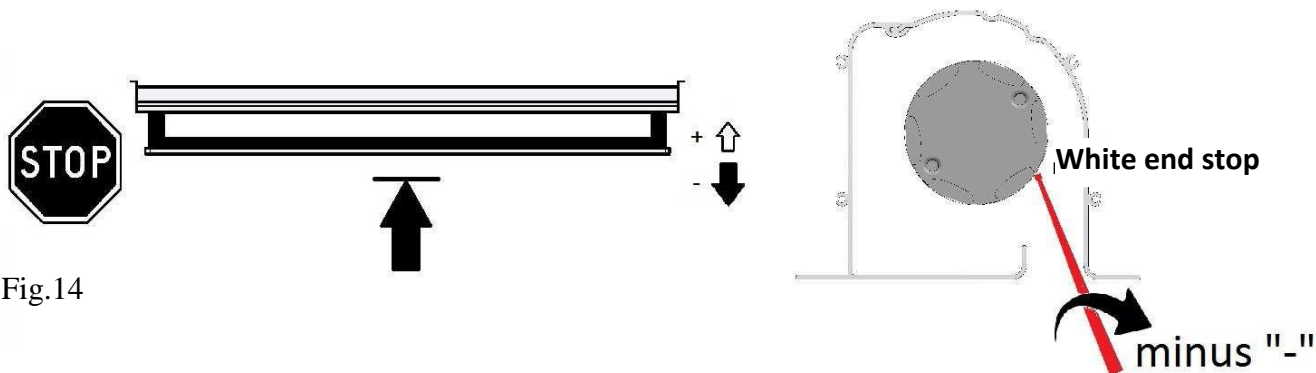


Fig.14

- Correcting the **bottom** end position (yellow end stop).

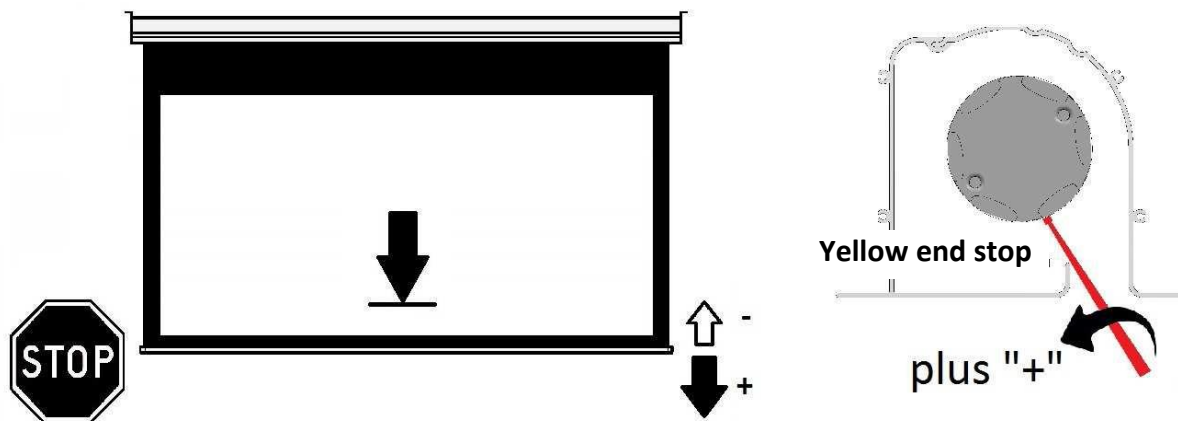


Fig.15

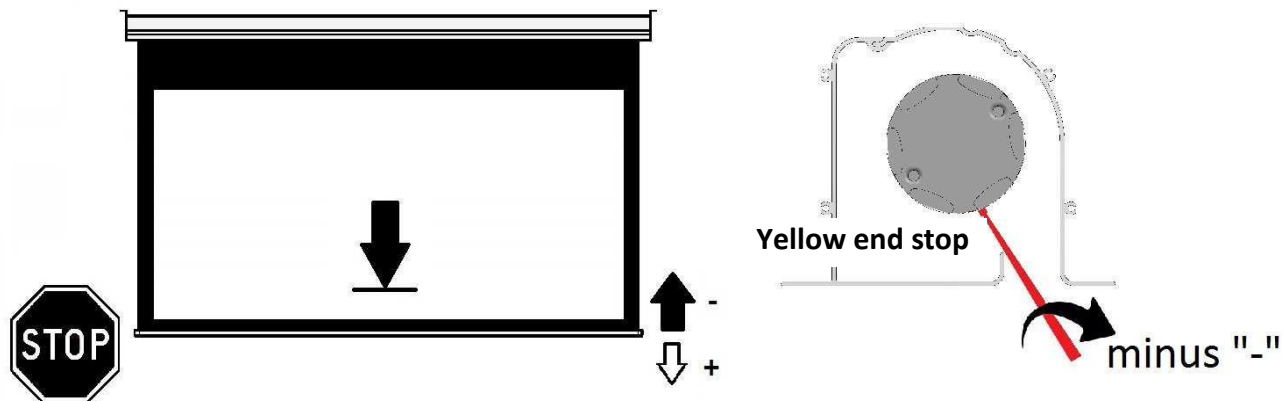


Fig.16

Adjusting the end positions (engine type "B" and "B-RTS" - check the engine type in the warranty card))

- Correcting **the top** end position (white end stop).

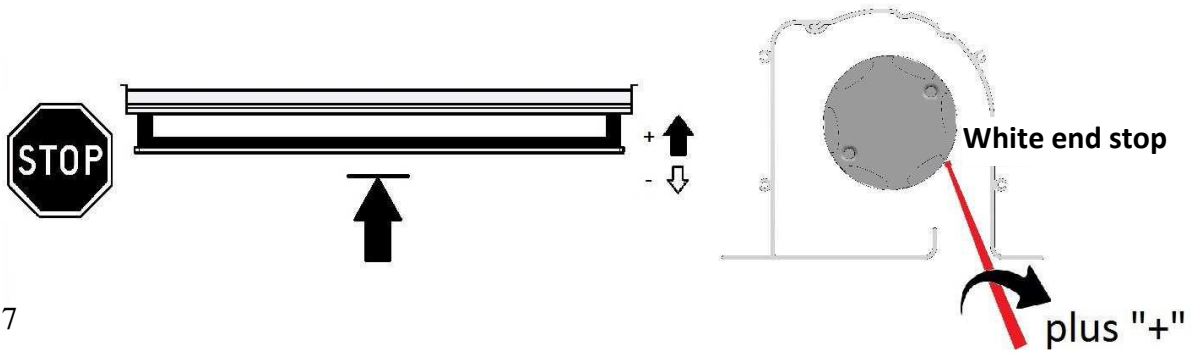


Fig.17

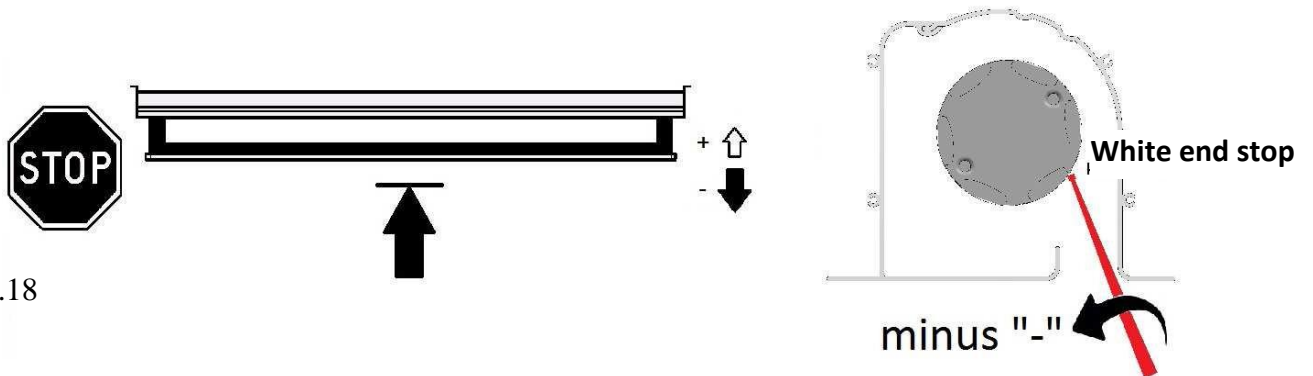


Fig.18

- Correcting **the bottom** end position (yellow end stop).

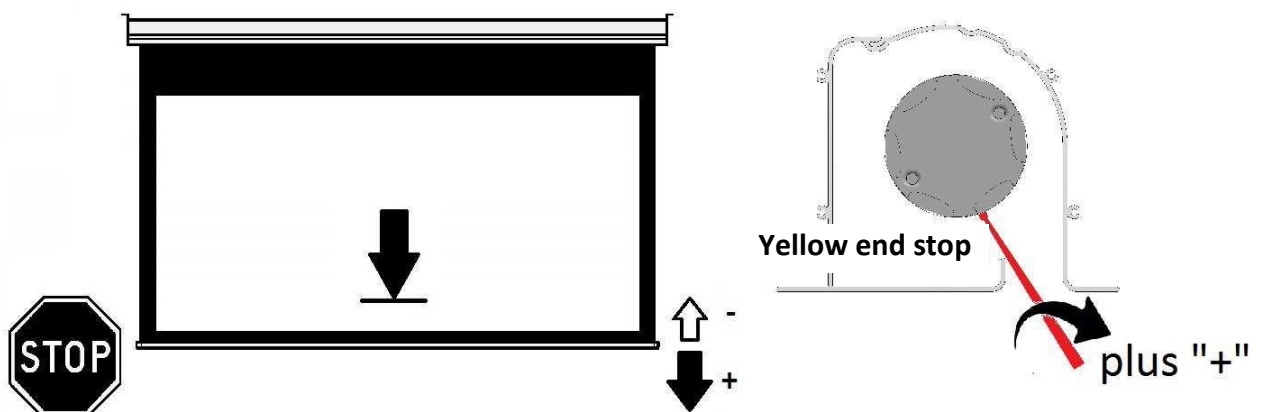


Fig.19

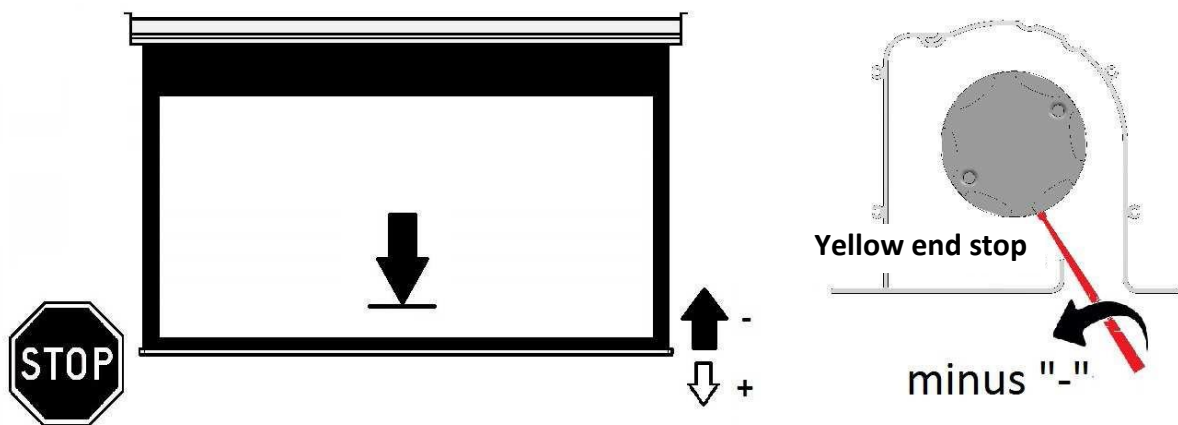


Fig.20

End positions adjustment (screen with built-in radio control – engine type "C-RTS")

Correcting the **bottom** end position:

1. Using the remote control button **UP** set the roller-blind in the top end position.
2. At the same time, press and hold for more than 5 seconds buttons **UP** and **DOWN**. The drive moves briefly up / down.
3. Using the buttons **UP**, **DOWN**, **STOP**, set the roller-blind in the new end position.
4. Press and hold the button **STOP** for more than 2 seconds The drive moves briefly up / down

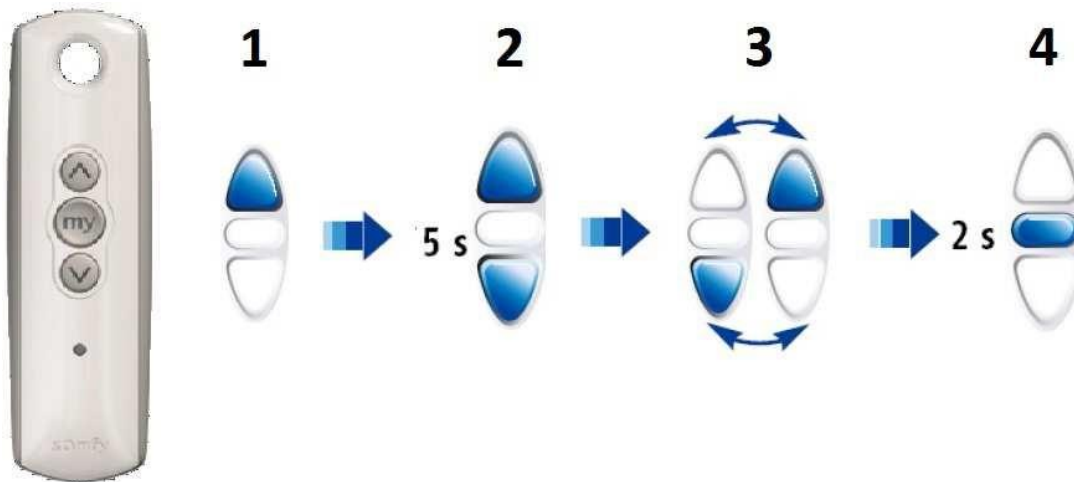


Fig. 21

Correcting the **bottom** end position:

1. Using the remote control button **DOWN** set the roller-blind in the bottom end position.
2. At the same time, press and hold for more than 5 seconds buttons **UP** and **DOWN**. The drive moves briefly up / down.
3. Using the buttons **UP**, **DOWN**, **STOP**, set the roller-blind in the new end position.
4. Press and hold the button **STOP** for more than 2 seconds The drive moves briefly up / down

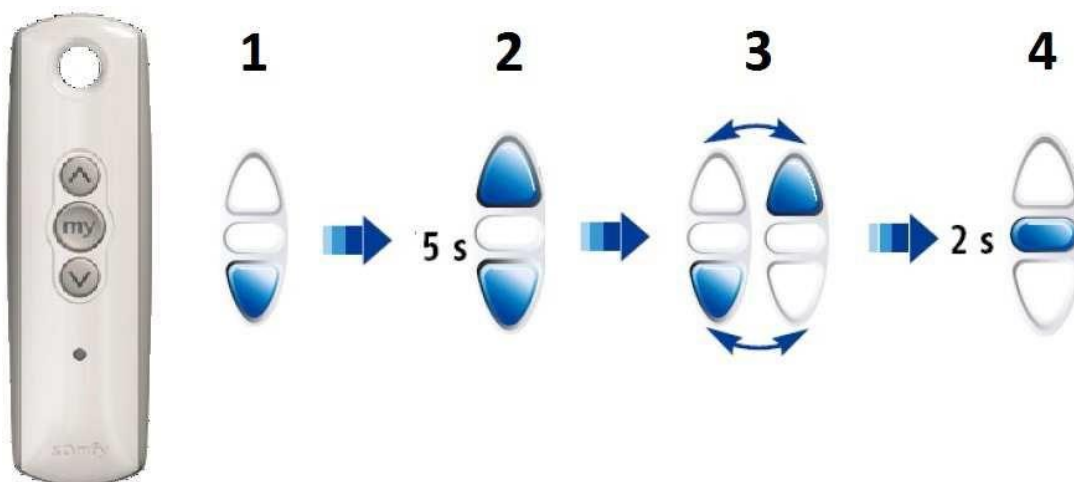


Fig.22

NOTE!

The screen may only be connected to the power supply by a person with appropriate electrical qualifications.

Before installing the screen cassette, lead the power supply cable to the place of installation and then connect it to the screen during installation according to the diagram A (Fig.23A) or according to the diagram B in the case of a screen with built-in radio control (Fig.23B).

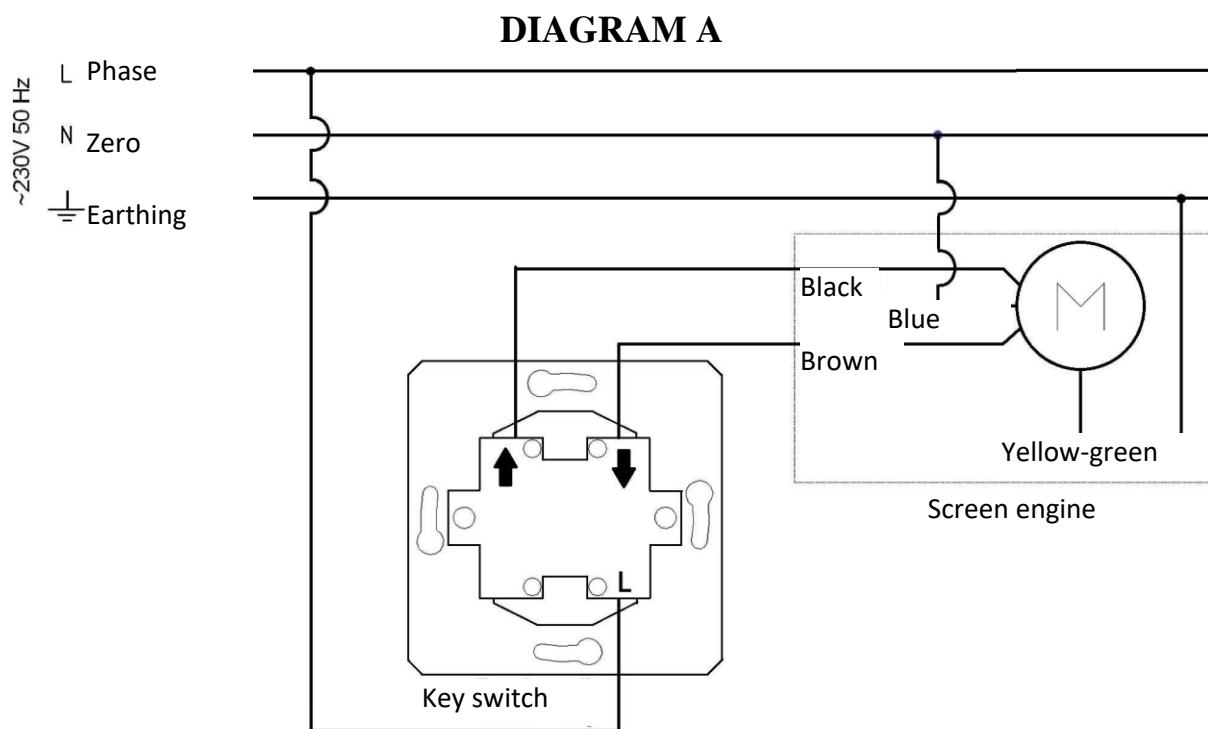


Fig. 23A

DIAGRAM B (built-in radio control)

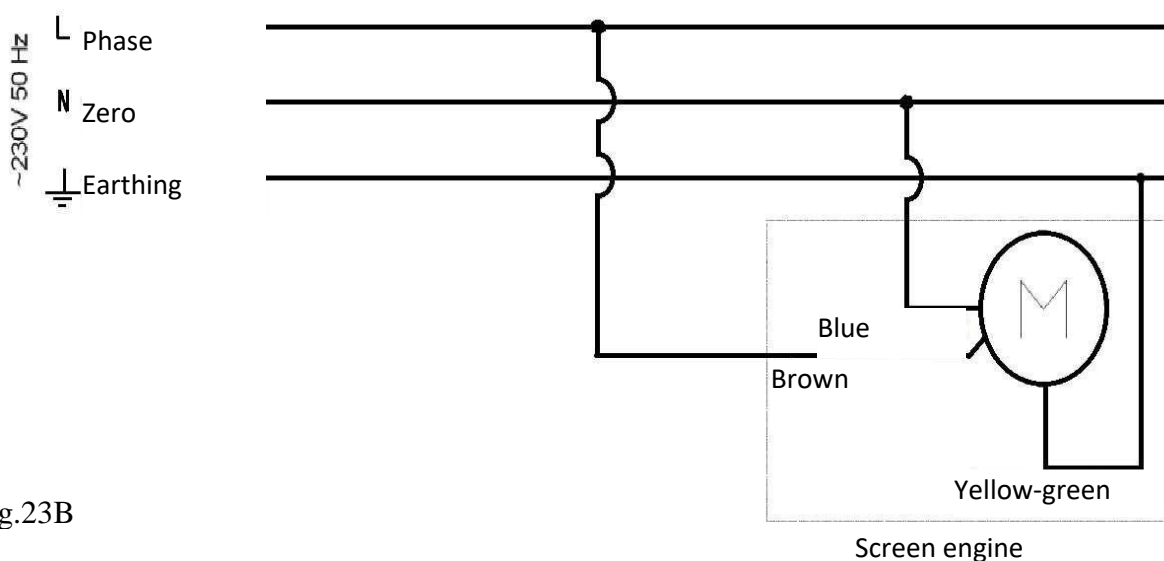


Fig.23B

Connecting a key switch from the set.

(The switch is available in the set for screen without a built-in radio control)

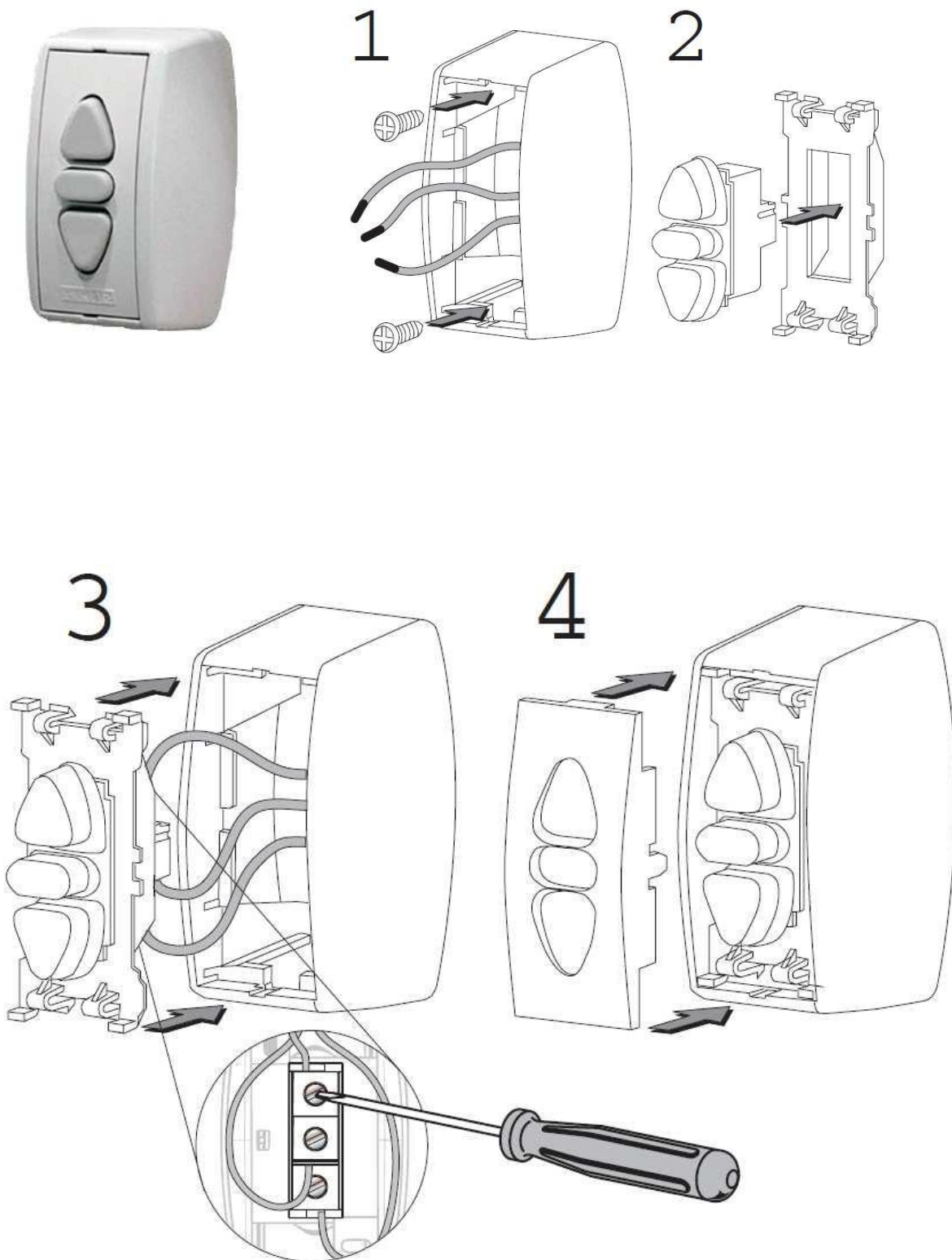


Fig.24

Diagram of connecting a key switch to the screen (screens with a "B" and "C" type engine)

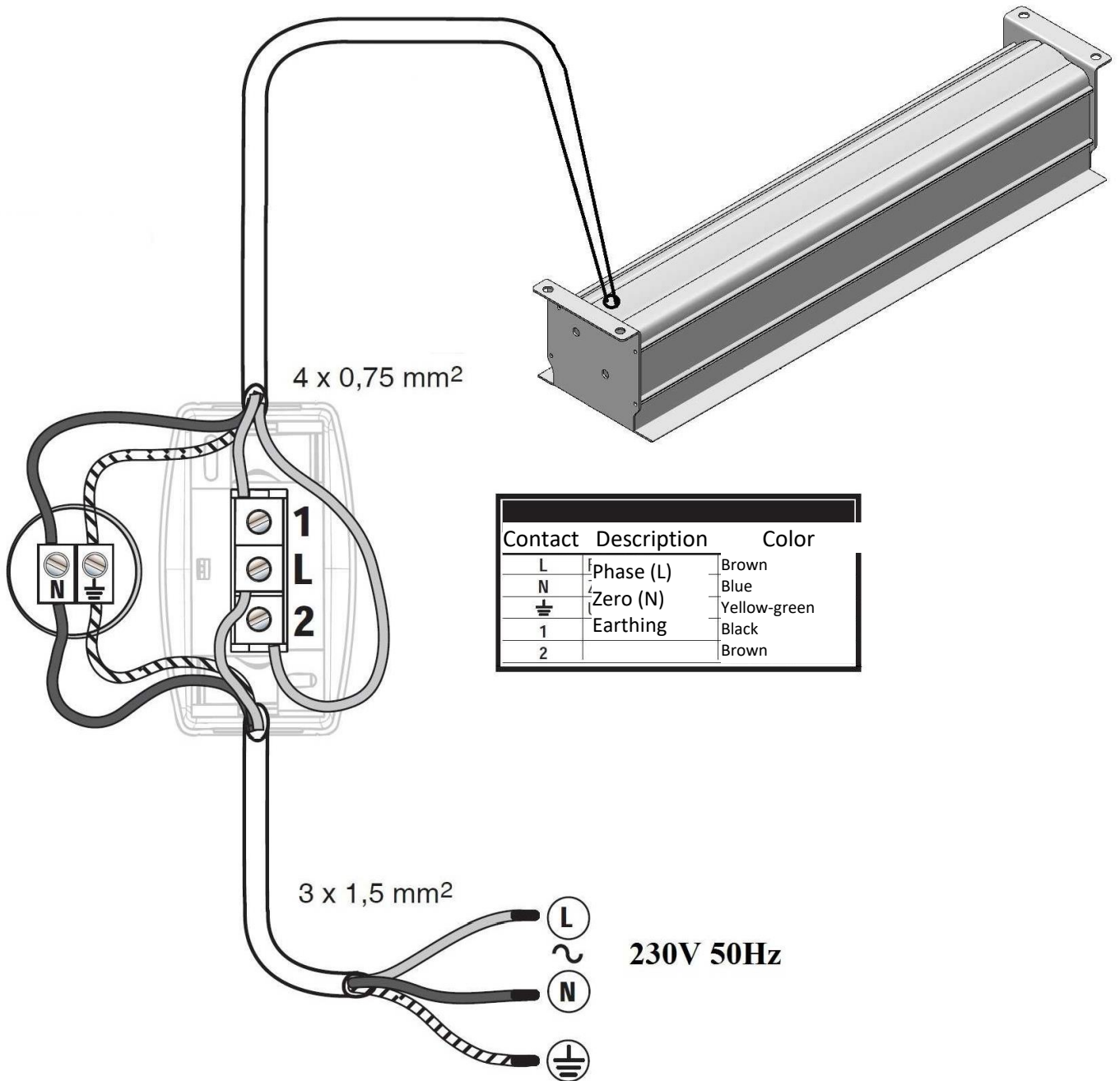
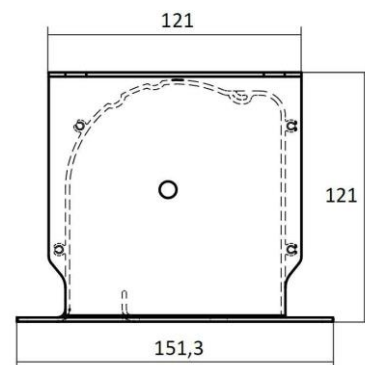
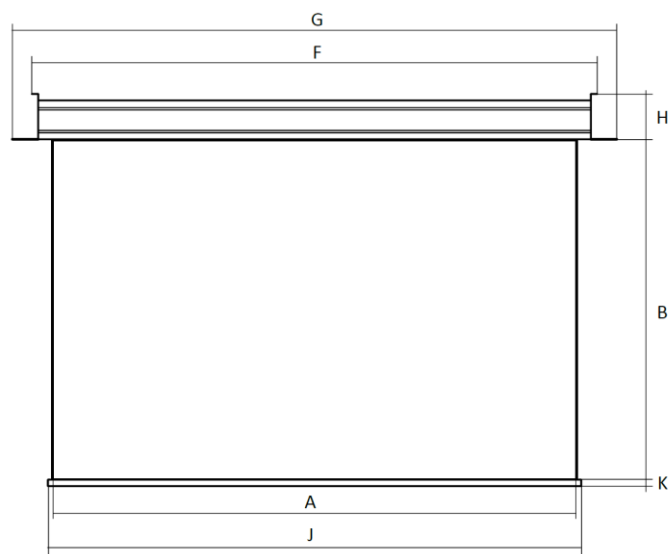


Fig.25

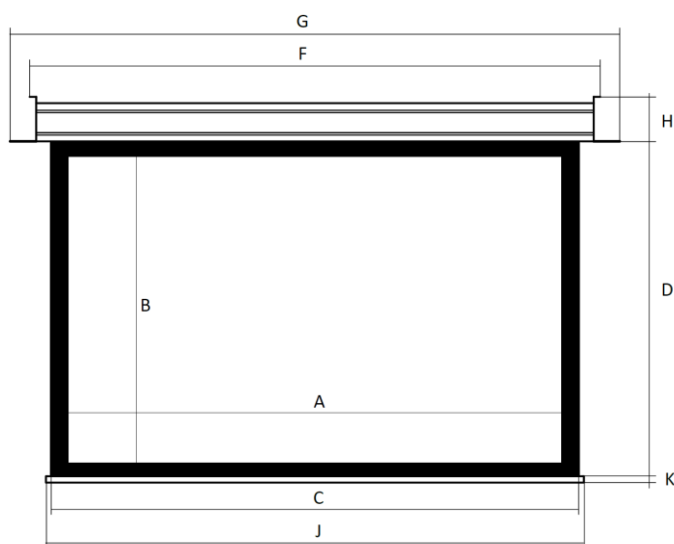
TECHNICAL DATA

Housing dimensions:



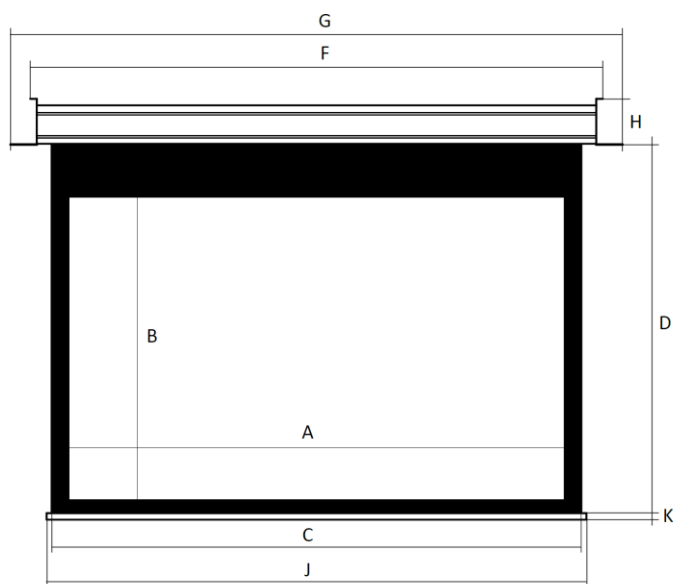
INCEILING

- A- surface width
- B- surface height
- $F = A + 108\text{mm}$
- $J = A + 30\text{mm}$
- $K = 50\text{mm}$
- $H = 121\text{mm}$
- $G = A + 148\text{mm}$



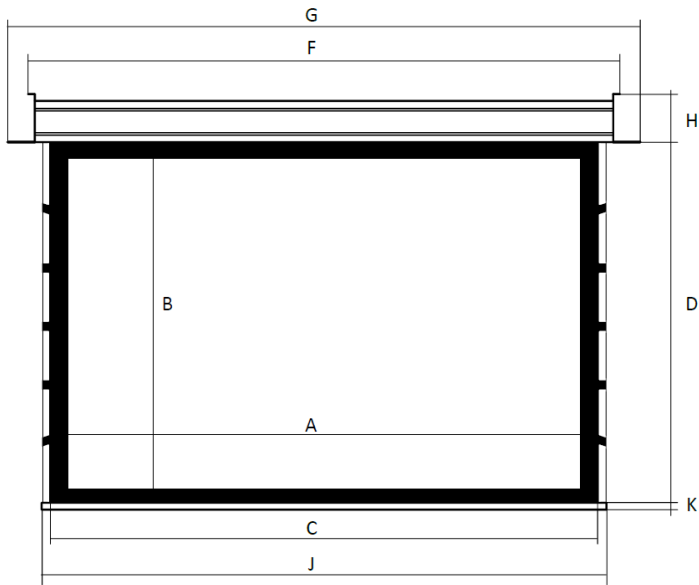
INCEILING + BLACK FRAME

- A- width of active surface
- B - height of active surface
- $C = A + 100\text{mm}$
- $D = B + 100\text{mm}$
- $F = A + 208\text{mm}$
- $J = A + 130\text{mm}$
- $K = 50\text{mm}$
- $H = 121\text{mm}$
- $G = A + 248\text{mm}$



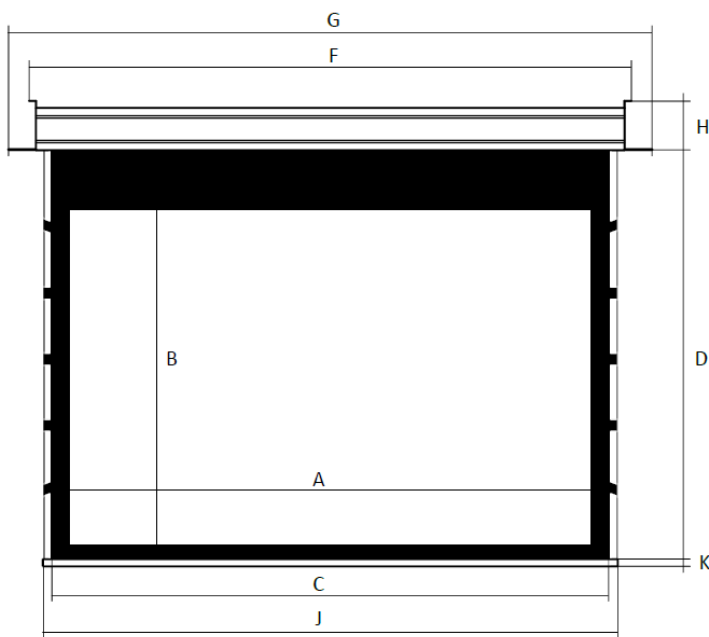
INCEILING + BLACK FRAME + BLACK STRIP

- A- width of active surface
- B - height of active surface
- $C = A + 100\text{mm}$
- $D = B + 50\text{mm} + \text{black strip height}$
- $F = A + 208\text{mm}$
- $J = A + 130\text{mm}$
- $K = 50\text{mm}$
- $H = 121\text{mm}$
- $G = A + 248\text{mm}$



INCEILING + TENSIONERS

- A- width of active surface
- B - height of active surface
- $C = A + 100\text{mm}$
- $D = B + 100\text{mm}$
- $F = A + 360\text{mm}$
- $J = A + 270\text{mm}$
- $K = 50\text{mm}$
- $H = 121\text{mm}$
- $G = A + 400\text{mm}$



INCEILING + TENSIONERS + BLACK STRIP

- A- width of active surface
- B - height of active surface
- $C = A + 100\text{mm}$
- $D = B + 50\text{mm} + \text{black strip height}$
- $F = A + 360\text{mm}$
- $J = A + 270\text{mm}$
- $K = 50\text{mm}$
- $H = 121\text{mm}$
- $G = A + 400\text{mm}$

Technical specifications:

Power supply: 230V 50Hz

Power: 120W – screen without a built-in radio control
 120W – screen with built-in radio control

Thank you for choosing the KAUBER screen.
We invite you to purchase other KAUBER products

w w w . k a u b e r . e u